

THE LATEST FROM OUR ZONE

Canterbury companies seeking more stable ground are driving up demand for land in Izone.

In the third quarter of this year 10 hectares within Izone has gone under contract for sale and since then negotiations in respect of several other land packages have been advanced.

Izone's development manager Robin Hughes said the level of enquiry increased dramatically following the earthquake. However it wasn't until the end of winter that businesses started to make decisions and insurance companies began considering insuring new buildings.

Since being established a decade ago 38 companies have committed to Izone, 25 of which employ around 400 people and are up and running. Two companies are currently building and two others are set to start building in the new year.

Mr Hughes said the strong demand for stable land to build on has encouraged the team behind Izone. "We are now designing Stage Six

which will open up a further 20 hectares of land for development, including a new entrance to Izone off Hoskyns Road. We hope to apply for consent before the end of the year.

"The strong level of sales is a continuation of the growth Selwyn as a district had been experiencing pre earthquakes."

Economically, Selwyn has been amongst New Zealand's top five performing regions since 2008 and last year was named the fastest growing region in the country by economic analyst company BERL.

"Selwyn has prospered from high commodity prices as well as lower land prices and lower rates," Mr Hughes said.

He predicts strong buyer levels will continue, fuelled not only by the search for stable land and the earthquake rebuild but completion of the Christchurch Southern Motorway and various regional irrigation schemes which will ultimately deliver more than a billion dollar boost to the national economy.



Providore, a high-end corporate gifts company.



Tennant Engineering.



Seed mixing plant at PGG Wrightson.



Stevens Seeds, an independent grain and seed company.



Relate Glass.



Westland Milk Products expansion.



Work continues on the Southern motorway.

Finding stable ground

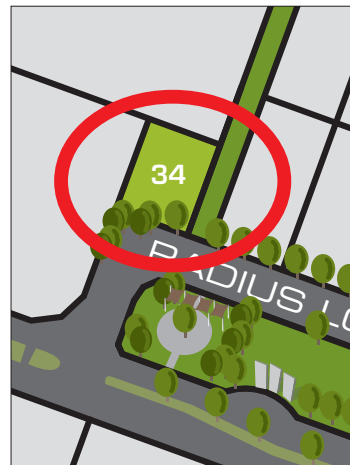
Christchurch glasshouse specialists, Exal Industries has been located in Phillipstown for 12 years but sadly as with many other Canterbury businesses the earthquakes prompted relocation. They are now planning to move to their new premises at Izone with their 11 staff early next year.

Director of Exal Industries David Hillman currently leases his Phillipstown building. "Rather than waiting for our factory to be rebuilt we decided it was the opportune time to build our own and Izone was the best option," says David. "The land is good value, we will be able to build a factory with more usable floor space and the ground is solid. We will also have enough land for our large machinery to be stored and room to expand the business in the future."

Exal Industries are manufacturers, builder suppliers and installers of commercial and domestic glasshouses nationwide. They not only construct commercial glasshouses they also design and maintain glasshouse equipment.

Each commercial glasshouse Exal Industries builds is a large scale project, sometimes taking up to four months to erect and requiring at least eight workers at a time. "Each job is different," says David. "The smallest commercial glasshouse we build is 500 sq metres and the largest we have constructed was two hectares, that's 20,000 sq metres – which is pretty big."

Work on the half-million-dollar factory at Izone will begin before Christmas with a move-in date of February 2012.



Proposed site for Exal Industries.

“
Canterbury companies seeking more stable ground are driving up demand for land in Izone
”



I ZONE
SOUTHERN BUSINESS HUB

Please email any queries to:

community@izone.org.nz

Beef dish finalist in national awards

Café Izone's head chef is a finalist in the Hospitality Association of New Zealand Awards for Excellence.

Kathryn Ahu's creation is a premium beef eye fillet with a creamy celeriac purée, garlic seared broccoli heads topped with a zesty gremolata and finished with Port wine jus.

The awards are being held at Wigram's Airforce Museum and Café Izone owners Steve and Shelly Trigg are shouting the staff, who've been with them since they opened in May 2009, to the evening's celebrations.

Last year Café Izone won the best new café/restaurant section and Steve Trigg hopes they'll add another award this year.

The awards will be held next Thursday, 3 November.



Café Izone head chef Kathryn Ahu.



Finalist beef dish.

The good people of Izone



Karen Ponsonby
Permbrand SI

Karen Ponsonby likes to keep busy. She is the head of Permbrand's silo building crew, working 50-60 hours a week managing the builds at Izone and on sites around the South Island.

She and her husband Leo run Greenacres Farm, their black and coloured sheep farm in Rolleston which they have owned for seven years. In her free time Karen coaches the Greenpark premier netball team who recently won their premier Selwyn competition final.

"I think working hard keeps you young and healthy. People are often surprised when they hear that I am 60 years old but I enjoy keeping busy and working with my great crew at Permbrand, says Karen. "My husband and I used to live in Dunsandel where we had around 150 acres, but we sold up to take it easy in Rolleston with a 50 acre farm – as you can see that has not happened."

Though busy travelling the South Island, Karen loves working at Izone. "It is only a five minute drive from home so when something happens at the farm, particularly in lambing season, I can shoot back easily which is great."



Doug Templer
PGG Wrightson Seeds

Doug Templer is a process supervisor and lives in Rolleston with his wife Stephenie and his 15 year old daughter, Mikayla.

Doug, who also has three stepchildren and four grandchildren, is heavily involved in swimming and volunteers for Swim Canterbury West Coast, Templeton Swim Club and is on the steering committee of Selwyn Aquatic Centre which is due to commence construction in the next few months. He is looking forward to the positive aspects the Centre will bring to the community.

Eighteen months ago Doug relocated from Templeton to Rolleston to enable Mikayla to attend Lincoln High School. "Rolleston is a young and vibrant community. It's close to many outdoor pursuits I enjoy such as mountain biking and kayaking" says Doug. "Since moving to Rolleston and working in Izone it has all been positive for me and my family."



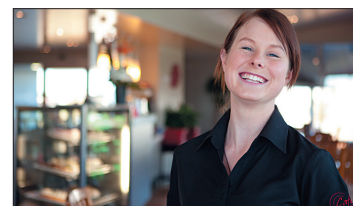
Ian Hay
St John Ambulance

Ian Hay is the rural support officer for St John Ambulance. Travelling as far as the Waitaki River and Mount Cook, Ian assists team managers with recruitment, staff retention and management.

Based at Izone, Ian finds it easy to travel to rural locations and enjoys the working environment. "I work with a great team of volunteers at St John, but we are always looking for more! Izone has lots of space, a great buzz and is a good base to work from", says Ian.

Ian, who has worked at St John Ambulance for 41 years, lives in the Christchurch suburb of Somerfield with his wife Liz; they have three adult children and 11 grandchildren. Ian and Liz love the theatre and try to travel once a year to Melbourne, Sydney or further abroad to see shows particularly those composed by Andrew Lloyd Webber.

Ian is also a Justice of the Peace and trainer in Canterbury. "Being a JP is very rewarding. It has given me a totally different outlook and view on life and community safety", says Ian.



Jen Samson
Café Izone

Like a lot of people her age 21 year-old Jen is saving hard for her much anticipated two year OE through Europe.

Having moved to Lincoln from her home town of Blenheim three months ago Jen moved in with her parents Dot and Bruce. It only takes Jen 15 minutes to drive to work meaning Jen not only saves precious money on fuel, it also means more time for her hobby – dancing.

"Working at Café Izone is great, as it is a destination spot so you know that those who come to the café are here for a reason they haven't just stopped as they were passing by," says Jen. "It is also a fun environment with a great team and though I can't wait to head overseas, I'm in no hurry to fly away just yet."

A keen dancer, Jen easily rattles off the names of six dance genres that she is passionate about. "My sister Kaitlyn and I love dancing and regularly practice at our local gym. Nights that I am not working I try to attend salsa – however work is definitely more of a priority right now!"



The Izone Hub landscaping.

WHY IZONE?

Ten years ago the Selwyn District Council decided to establish an industrial park on former farmland across State Highway One from Rolleston.

The reasons for doing so included:

- increase local job opportunities for Selwyn residents;
- reduce the number of people having to commute to Christchurch for work;
- generate income for Selwyn District Council to help keep rates down.

Izone is New Zealand's largest and one of the most modern industrial developments. Its state-of-the art infrastructure features wide roads, energy efficient lighting and environmentally appropriate landscaping.